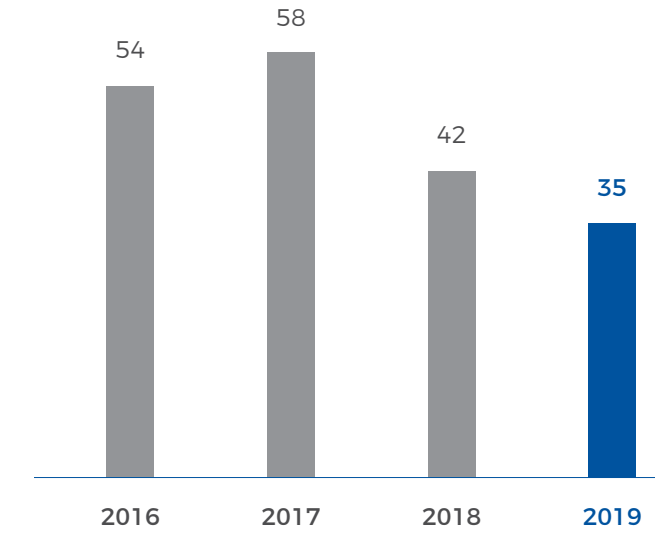


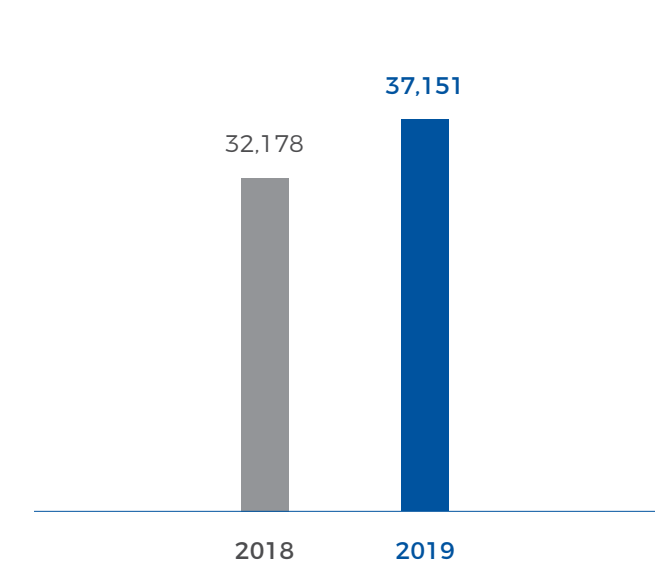
## OUR PERFORMANCE

### NIĞDE PLANT'S SCOPE 2 EMISSION VALUES CO<sub>2</sub> / TON CEMENT

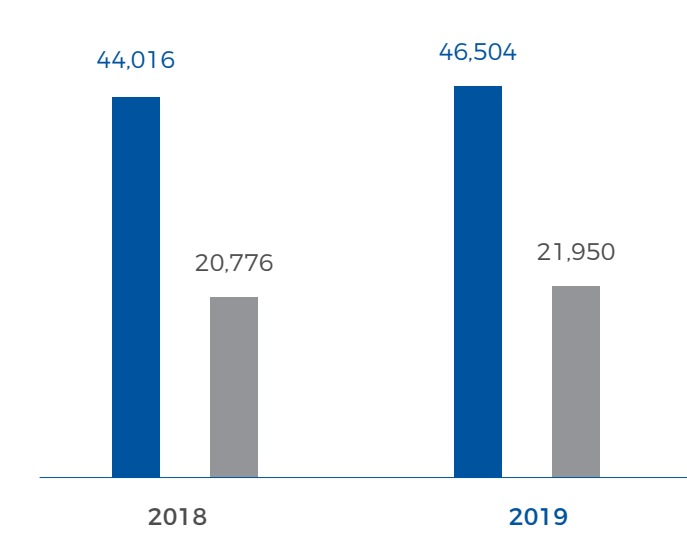


The Company achieved energy efficiency in Scope 2 specific energies with the investment completed at the Niğde Plant in 2017 within this scope. This energy efficiency led to a 35% reduction in CO<sub>2</sub> emissions per kg of cement between 2016 and 2019.

### REUSED WATER m<sup>3</sup>

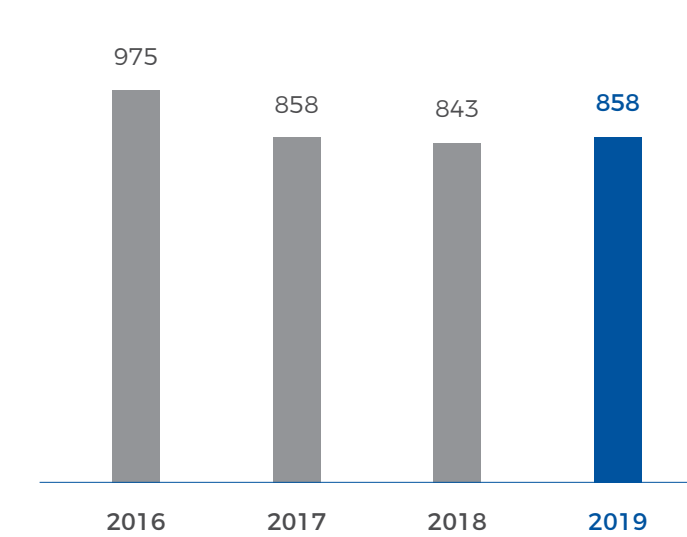


### LAST 2 YEARS' DATA OF THE MERSIN PLANT'S WASTE GAS HEAT FACILITY



■ Electricity Generation from Waste Heat (MWh/year)  
■ CO<sub>2</sub> Saving due to Electricity Generation from Waste Heat (Tons/year)

### AFYON PLANT CEMENT SPECIFIC (KG CO<sub>2</sub>/TON CLINKER)/YEARS



Up to 12% per ton clinker decline was achieved in CO<sub>2</sub> due to low carbon technology investment made between 2016 to 2019 in Afyon Factory in the past years.



Carbon Disclosure Project

Çimsa received a **B rating** in the 2019 CDP Climate Change and Water Report.

### POLLUTANT EMISSIONS

	2018	2019
Total Dust Emissions (tons)	87.53 <sup>1</sup>	74.46 <sup>2</sup>
Specific Dust Emissions (g/ton clinker)	15.11 <sup>1</sup>	14.26 <sup>2</sup>
Total NOx Emissions (tons)	7.346.66 <sup>1</sup>	7.765.23 <sup>2</sup>
Specific NOx Emissions (g/ton clinker)	1.268.32 <sup>1</sup>	1.486.62 <sup>2</sup>
Total SO <sub>2</sub> Emission (tons)	67.51 <sup>1</sup>	153.34 <sup>2</sup>
Specific SO <sub>2</sub> Emission (g/ton clinker)	11.66 <sup>1</sup>	29.36 <sup>2</sup>
Total Toxic Heavy Metal Emission (tons)	0.22 <sup>1</sup>	0.22 <sup>1</sup>
Specific Toxic Heavy Metal Emission (g/ton clinker)	0.04 <sup>1</sup>	0.04 <sup>1</sup>
Total Volatile Organic Compound (VOC) Emission (tons)	117.98 <sup>1</sup>	68.36 <sup>2</sup>
Specific Volatile Organic Compound (VOC) Emission (g/ton clinker)	20.37 <sup>1</sup>	13.09 <sup>2</sup>
Total Dioxin-Furan Emission (g)	0.02 <sup>1</sup>	0.02 <sup>1</sup>
Specific Dioxin-Furan Emission (µg/ton clinker)	0.003 <sup>1</sup>	0.004 <sup>1</sup>
Total Mercury Emission (tons)	0.01 <sup>1</sup>	0.005 <sup>1</sup>
Specific Mercury Emission (g/ton clinker)	0.002 <sup>1</sup>	0.001 <sup>1</sup>
Total Cd+Tl Emission (tons)	0.05 <sup>1</sup>	0.01 <sup>1</sup>
Specific Cd+Tl Emission (g/ton clinker)	0.01 <sup>1</sup>	0.002 <sup>1</sup>
Total HCl (ton)	0.34 <sup>1</sup>	2.85 <sup>1</sup>
Specific HCl (g/ton clinker)	0.06 <sup>1</sup>	0.55 <sup>1</sup>
Total HF (ton)	0.83 <sup>1</sup>	0.75 <sup>1</sup>
Specific HF (g/ton clinker)	0.14 <sup>1</sup>	0.14 <sup>1</sup>

<sup>1</sup> Spot Measurement <sup>2</sup> Continuous Measurement

	2018	2019
Mining fields with approved ecological recovery plans (hectares)	609.62	760.71
Active Mining Fields (hectares)	956.69	1,019.09
Rehabilitated Fields (hectares)	0.73	18.35

### CORPORATE SOCIAL RESPONSIBILITY

The Yaz Çocukları project was initiated by Çimsa in Niğde in 2011 with the participation of 32 children, with the aim of contributing to their development. The total number of children participating in the Çimsa Yaz Çocukları Project had reached approximately 1,000 as of the end of 2019. As part of the project, one psychologist, three drama teachers and three physical education teachers provide two-week-long courses to children aged between 7 and 12.

Initially, the project was realized with the participation of the children of the employees from Çimsa's Niğde Plant, and was expanded in following years to include children from nearby villages. The project, which has been ongoing for 9 years, was also carried out in Mersin in 2016 and in 2017, and the project moved to Kayseri for the first time in 2018.



Global Cement and Concrete Association  
gccassociation.org

After its greenhouse gas emissions are verified by an independent audit company, Çimsa submits the reports to the GNR database of the GCCA within the framework of the "Assurance Declaration". To this end, Çimsa is able to compare itself with other GCCA member countries to assess its own performance.

	2018	2019
Amount of Scope 1, Gross Specific Cementitious CO <sub>2</sub> Emission (kg CO <sub>2</sub> / ton)	808 <sup>*</sup>	823 <sup>*</sup>
Gross Specific Gray Cementitious CO <sub>2</sub> Emission (kg CO <sub>2</sub> / ton)	782	800
Gross Specific White Cementitious CO <sub>2</sub> Emission (kg CO <sub>2</sub> / ton)	904	897
Gross Specific CAC Cementitious CO <sub>2</sub> Emission (kg CO <sub>2</sub> / ton)	828	836

\*Gray + White + CAC

# Transforming for the Future

## MESSAGE FROM THE CEO



Supporting the 2030 Agenda for Sustainable Development and having adopted the UN Sustainable Development Goals in its strategic foundations, corporate priorities and objectives, Çimsa foresees that the growth, integration process and digital transformation efforts will gain momentum with this project, which is called "One Team One Voice".

I would like to thank our team for achieving this extraordinary change and performance of 2019, and I would like to express my gratitude to our Board of Directors and to all our stakeholders for their contributions.

Ülkü ÖZCAN  
CEO

### WE HAVE REDEFINED OUR STRATEGIC FOUNDATIONS AND CORPORATE VALUES.

Advancing into the future with nearly half a century of experience, a wide product range and innovative business approach, Çimsa is an international cement and building materials company which is focused on constantly growing by setting itself apart in its sector with its respectful approach to people and the environment. From this point of view, Çimsa re-defined its corporate values and strategic foundations in 2019.



2019 SUMMARY INTEGRATED ANNUAL REPORT



To access the PDF copy of Çimsa's 2019 Integrated Annual Report, scan the QR code in your browser.

Çimsa CEO mesajı, 2019 Entegre Faaliyet Raporu'nun 4-9. sayfalarında yer almaktadır.



# ÇİMSA BUSINESS MODEL

## MAIN STAKEHOLDERS WE PROVIDE BENEFIT



## OUR STRATEGIES

GROWTH AND INTEGRATION  
CASH MANAGEMENT, OPERATIONAL AND TECHNICAL DISCIPLINE  
DIGITAL AND CULTURAL TRANSFORMATION



## OUR VALUES

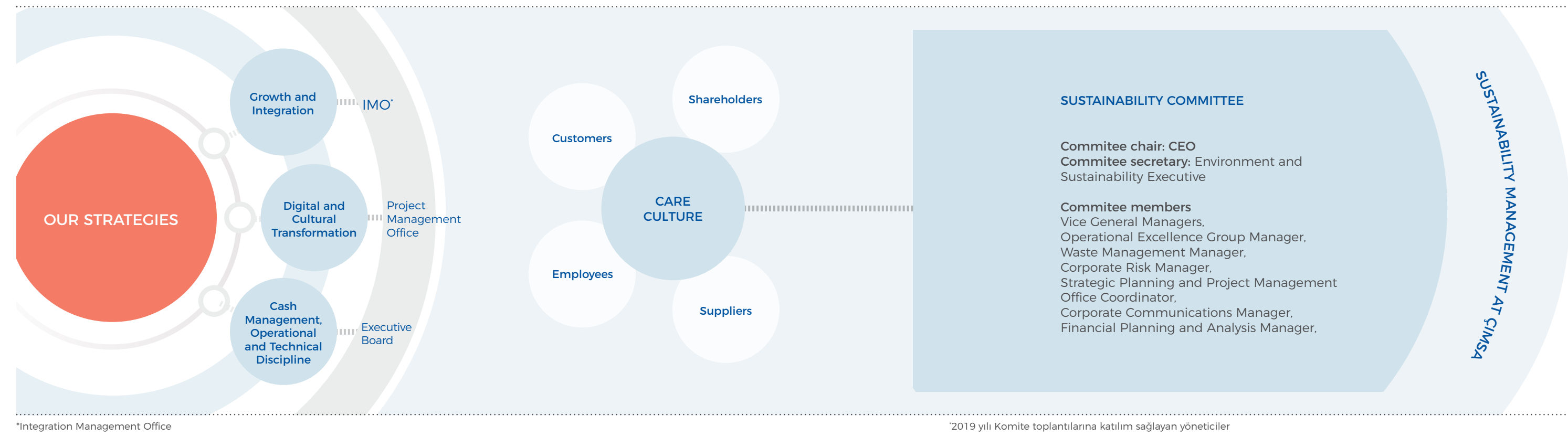


## OUR GOAL

To become an international cement and construction materials company which leads the industry for a habitable future

## OUR MISSION

To create value for all our stakeholders as a company that swiftly produces solutions which will meet the differing needs of our customers and employees in an everchanging world with the products and services we have developed together with our business partners in order to ensure sustainability of growth

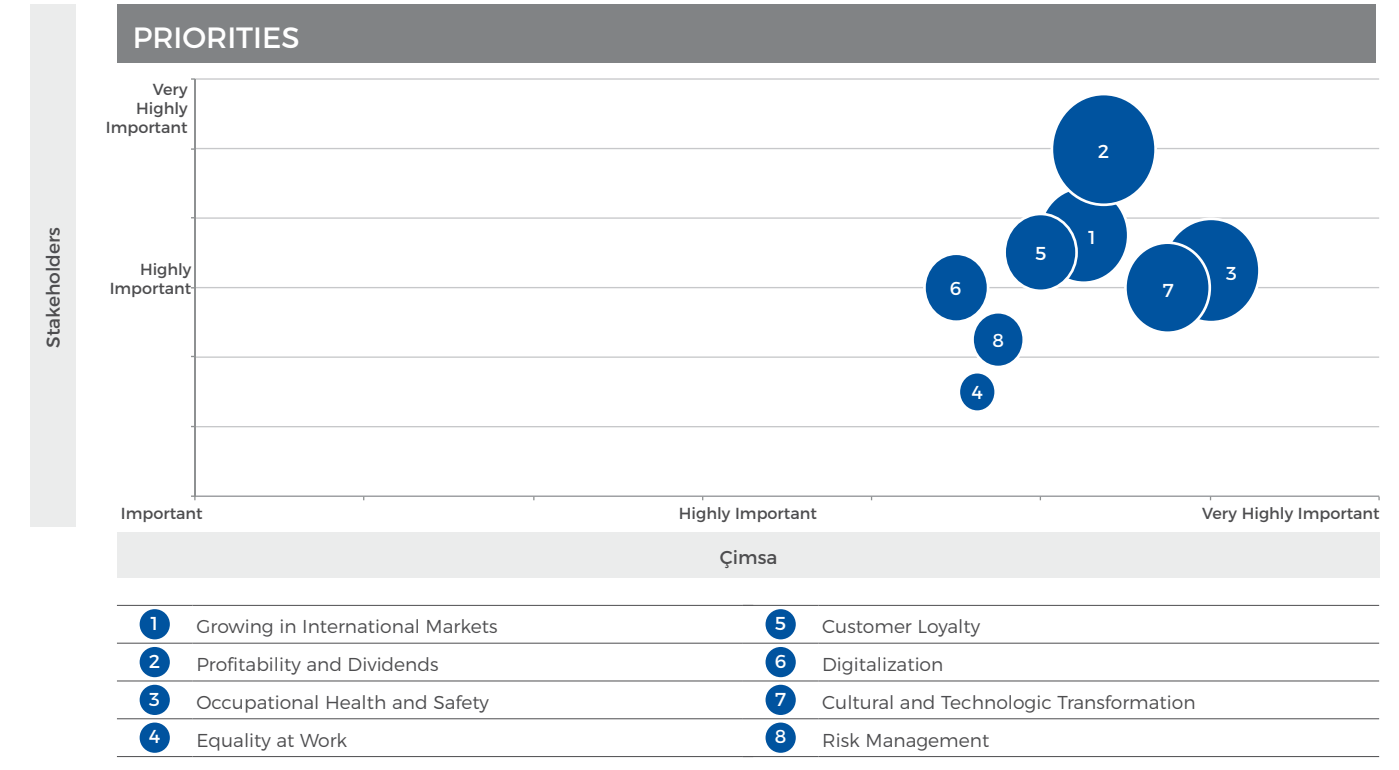


# POLICIES APPLIED AT ÇİMSA

Çimsa conducts its operations within the scope of different policies and strategies which guide stakeholder relations as well as the production and trade cycle. Details of these policies are provided on the web links and/or the related section of the full version of the 2019 Integrated Annual Report.

Policies	
<b>Sustainability</b>	<b>Corporate Governance</b>
Environmental Policy	Disclosure Policy
Health and Safety Policy	Profit Distribution Policy
Quality Policy	Remuneration Policy
Stakeholder Engagement Policy	Donation and Aid Policy
Waste Policy	
<b>Human Resources</b>	<b>Strategies</b>
Information Security Policy	Climate Change Strategy
Personal Data Protection Policy	Alternative Fuels Strategy
Anti-Bribery Anti-Corruption Policy	

# OUR PRIORITIES



# ÇİMSA'S GOALS AND CONTRIBUTION TO THE SDGs

## ÇİMSA'S PRIORITY SDG'S



MAIN GOAL	Base Year	KPI	2018	2019	TARGET	TARGET YEAR	SDG
To decrease the accident frequency ratio (AFR) for Çimsa employees, with respect to 2018 figures, by 2025	2018	8.73	8.73	6.15	< 3	2025	8 9 11
To decrease the accident severity ratio (ASR) for Çimsa employees, with respect to 2018 figures, by 2025	2018	188.06	188.06	212.5	< 150	2025	8 9 11
To develop and extend the summer children project, which is organized for the children - Çimsa's main theme in terms of social responsibility projects - and to increase the realization ratio in the provinces where Çimsa is operative	2011	20%	50%	50%	100%	2025	10
To decrease the gross CO <sub>2</sub> ratio for grey clinker, with respect to 2017 figures, by 2025*	2017	4,148,165 tons	3,985,442 tons	3,499,109 tons	5%	2025	9 11 13
To reduce the CO <sub>2</sub> ratio for clinker per tonne, with respect to 2015 figures, by 2025*	2015	872 kg CO <sub>2</sub> /ton grey clinker	878 kg CO <sub>2</sub> /ton grey clinker	885 kg CO <sub>2</sub> /ton grey clinker	1.95%	2025	9 11 13
With the completion of the required investments, to meet at least 10% of the total thermal power of Çimsa plants with alternative fuels*	2018	6.8%	6.8%	7.5%	10%	2025	8 9 11 13
To reduce total water consumption by 40%, with respect to 2016 levels, by 2020	2016	1,662,358 litres	1,117,055 litres	1,671,757 litres	40%	2020	9 11 12

\*Only grey production

One of the main elements of Çimsa's sustainability approach is to set accountable, trackable and transparent integrated goals, and to periodically report the progress achieved in this context.

Çimsa contributes to its prioritized SDGs and 2030 Sustainable Development Agenda to the extent it approaches its corporate goals.